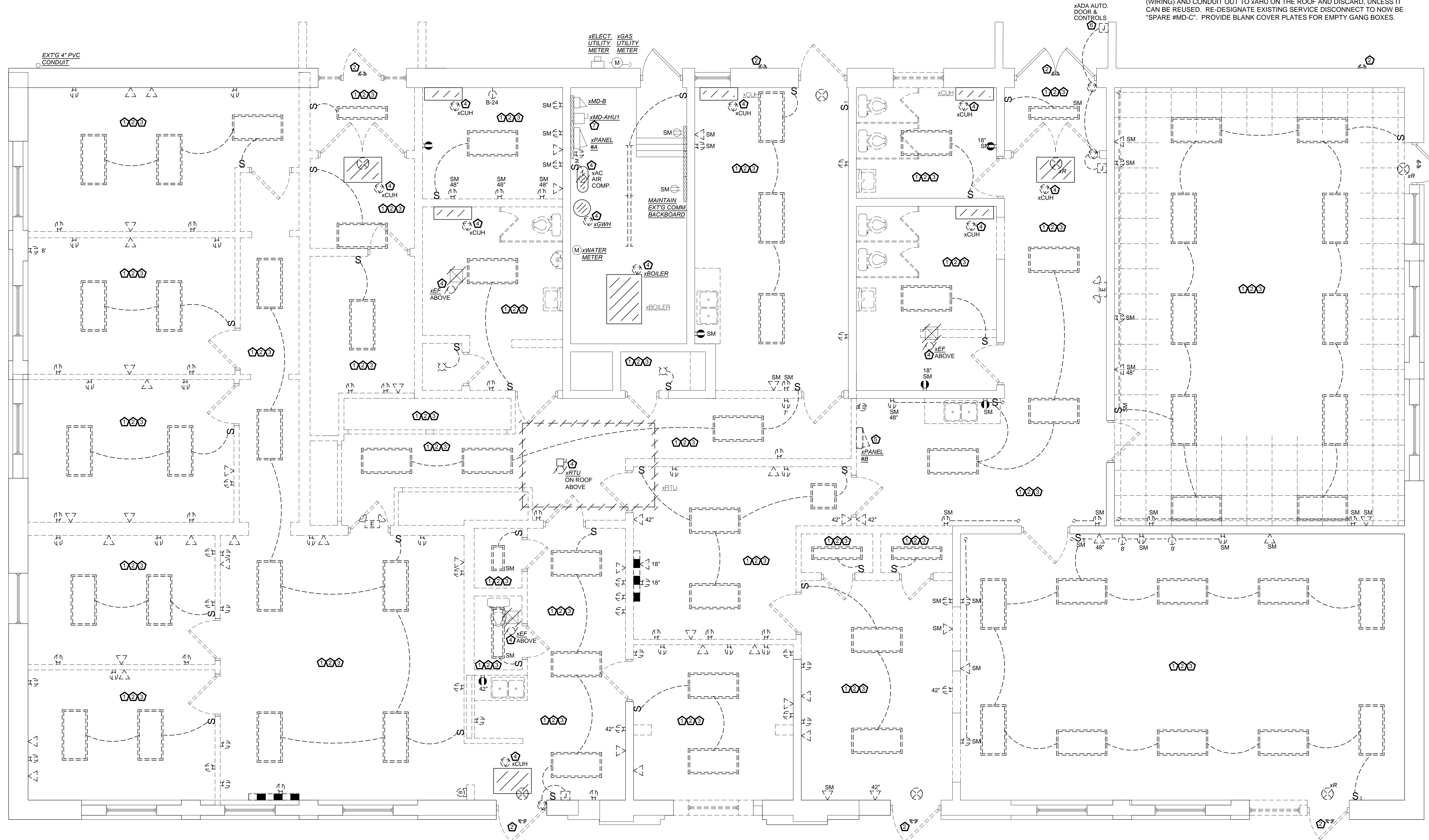


GENERAL ELECTRICAL DEMOLITION NOTES

- SEE THIS SHEET FOR ELECTRICAL DEMOLITION NOTE LEGEND.
- ELECTRICAL CONTRACTOR (E.C.) SHALL REMOVE ALL LIGHT FIXTURES AS INDICATED ON DRAWINGS. IF ANY LIGHT FIXTURE BALLASTS ARE FOUND TO CONTAIN PCB'S THE ELECTRICAL CONTRACTOR SHALL REMOVE BALLAST FROM LIGHT FIXTURES AND DISPOSE OF IN APPROVED DISPOSAL CONTAINERS PROVIDED BY THE OWNER. THE OWNER SHALL BE RESPONSIBLE FOR PROPER DISPOSAL PER LOCAL, STATE AND FEDERAL LAWS AND PAY FOR ALL ASSOCIATED COSTS OF DISPOSAL.
- E.C. SHALL BE RESPONSIBLE FOR DISPOSAL OF REMAINING LUMINAIRE PARTS & ANY NON-PCB FIXTURES PER LOCAL, STATE, AND FEDERAL REGULATIONS AND PAY FOR ALL ASSOCIATED COSTS OF DISPOSAL.
- E.C. SHALL DISCONNECT AND REMOVE ALL ELECTRICAL EQUIPMENT, (WHICH INCLUDES BUT IS NOT LIMITED TO DEVICES, FIXTURES, WIRING (CIRCUITRY), CABLING, CONDUIT, ETC.), AS DESCRIBED AND SHALL GIVE THE OWNER AN OPPORTUNITY TO KEEP DEMOLISHED ELECTRICAL EQUIPMENT PRIOR TO THEM BEING DISCARDED.

ELECTRICAL DEMOLITION KEY NOTES

- Ⓜ DISCONNECT AND REMOVE ELECTRICAL DEVICE(S) WHICH WILL INTERFERE WITH THE DEMOLITION AND REMOVAL OF WALLS, FLOORING, AND/OR CEILING AS DESCRIBED IN THE ARCHITECTURAL DEMOLITION PLANS. REMOVE EXISTING CIRCUITRY (WIRING) AND CONDUIT BACK TO PANEL AND DISCARD.
- Ⓜ DISCONNECT AND REMOVE ALL EXISTING LIGHTS AND LIGHTING CONTROLS IN THIS AREA AS SHOWN. REMOVE EXISTING CIRCUITRY (WIRING) AND CONDUIT BACK TO PANEL AND DISCARD (UNLESS IT CAN BE REUSED). INSTALL NEW LIGHTS AND LIGHTING CONTROLS AS SHOWN ON NEW ELECTRICAL SHEETS. PROVIDE BLANK COVER PLATES FOR EMPTY GANG BOXES.
- Ⓜ DISCONNECT AND REMOVE ALL EXISTING RECEPTACLES AND POWER DEVICES IN THIS AREA AS SHOWN. REMOVE EXISTING CIRCUITRY (WIRING) AND CONDUIT BACK TO PANEL AND DISCARD (UNLESS IT CAN BE REUSED). INSTALL NEW RECEPTACLES AND POWER DEVICES AS SHOWN ON NEW ELECTRICAL SHEETS. PROVIDE BLANK COVER PLATES FOR EMPTY GANG BOXES.
- Ⓜ DISCONNECT AND REMOVE EXISTING ELECTRICAL CONNECTIONS TO EXISTING MECHANICAL EQUIPMENT WHICH IS TO BE REMOVED. COORDINATE DISCONNECTION WITH MECHANICAL CONTRACTOR. REMOVE CIRCUITRY (WIRING) AND CONDUIT BACK TO PANEL AND DISCARD, UNLESS IT CAN BE REUSED.
- Ⓜ DISCONNECT AND REMOVE EXISTING ELECTRICAL CONNECTIONS TO EXISTING ELECTRICAL PANEL THAT IS TO BE RELOCATED. COORDINATE DISCONNECTION WITH EXISTING LOADS. REMOVE EXISTING FEEDER AND BRANCH CIRCUITRY (WIRING) AND CONDUIT TO PANEL AND DISCARD, UNLESS IT CAN BE REUSED. INSTALL EXISTING ELECTRICAL PANEL IN NEW LOCATION AS SHOWN ON NEW ELECTRICAL SHEETS.
- Ⓜ **BASE BID**
DISCONNECT AND REMOVE EXISTING ELECTRICAL CONNECTIONS TO EXISTING ADA AUTOMATIC DOOR AND CONTROLS THAT IS TO BE REMOVED. COORDINATE DISCONNECTION WITH GENERAL TRADES. REMOVE EXISTING CIRCUITRY (WIRING) AND CONDUIT TO PANEL AND DISCARD, UNLESS IT CAN BE REUSED. PROVIDE BLANK COVER PLATES FOR EMPTY GANG BOXES.
ADD ALTERNATE #6
DISCONNECT AND REMOVE EXISTING ELECTRICAL CONNECTIONS TO EXISTING ADA AUTOMATIC DOOR AND CONTROLS THAT IS TO REMAIN. COORDINATE DISCONNECTION WITH GENERAL TRADES. REMOVE EXISTING CIRCUITRY (WIRING) AND CONDUIT TO PANEL AND DISCARD, UNLESS IT CAN BE REUSED. RE-CIRCUIT EXTG ADA AUTOMATIC DOOR AND CONTROLS AS SHOWN ON NEW ELECTRICAL SHEETS. PROVIDE BLANK COVER PLATES FOR EMPTY GANG BOXES.
- Ⓜ DISCONNECT AND REMOVE EXISTING ELECTRICAL CONNECTIONS TO EXISTING SERVICE DISCONNECT #MD-AH11 WHICH IS TO BE ABANDONED. COORDINATE DISCONNECTION WITH MECHANICAL CONTRACTOR. REMOVE BRANCH CIRCUITRY (WIRING) AND CONDUIT OUT TO xAHU ON THE ROOF AND DISCARD, UNLESS IT CAN BE REUSED. RE-DESIGNATE EXISTING SERVICE DISCONNECT TO NOW BE "SPARE #MD-C". PROVIDE BLANK COVER PLATES FOR EMPTY GANG BOXES.



ELECTRICAL FLOOR PLAN
1/4" = 1'-0" NORTH

ARCHITECTURE
CONSTRUCTION MANAGEMENT
DEVELOPMENT

1104 S. MITCHELL ST.
CADILLAC, MICHIGAN 49601
(231) 779-4002
(231) 779-4022 FAX

Proposed Renovation for:
Reed City Area District Library
829 South Chestnut St.
Reed City, MI 49677

1995 • CELEBRATING 20 YEARS • 2015

830 Cottageview Dr., Suite 102
Traverse City, MI 49684
P 231.933.0510 F 231.933.3215
W www.nealisengineering.com

ARCHITECT OF RECORD:
D. DeKryger

DRAWN BY:
B. Reinhardt

DATE ISSUED:
July 31, 2015 Construction Drawings

SHEET NUMBER:
ED1.0

PROJECT NUMBER:
15121